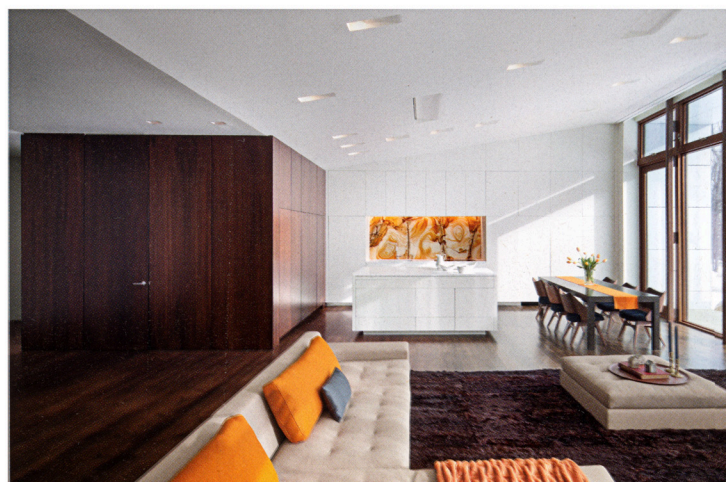


perspective **house of the month**

A HOUSE IN THE WOODS BY WILLIAM REUE MELTS ORGANIC AND GEOMETRIC FORMS IN THE LANDSCAPE. BY NICOLE ANDERSON



A Cor-Ten steel wall (far left, top) defines the north elevation. On the south face, Reue framed the expanse of windows in fiber cement board panels and clad the flanking ends in bluestone (far left, bottom). Floor-to-ceiling windows in the bedroom (left) and living room (below) open to sweeping views of the mountains.



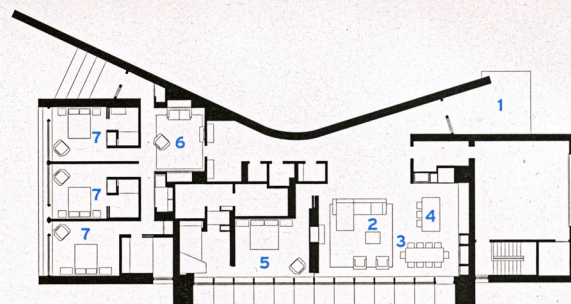
**AT ONE OF** their first meetings, William Reue's client handed him a piece of paper bearing a rough sketch of the home that she had been imagining for the last 25 years. Her preliminary drawing centered on a curving Cor-Ten steel wall. And it was this defining feature, calling to mind Richard Serra's monolithic sculptures, that served as the starting point for the 4,800-square-foot retreat in upstate New York.

Sitting at the foot of the Shawangunk Mountains, the house, sheltered by Norway spruces, overlooks the expanse of the Hudson Valley. Its exterior is defined by the curved wall and a block-like mass of local bluestone. Radial-saw marks from the manufacturer left streaks on the stone cladding, making the house appear as if it has been "cut from the earth," says Reue.

The owner, a single woman, wanted

public and private spaces for herself and her guests. The 125-foot-long steel wall on the north face inflects circulation inside the house around its bent form, and through the communal spaces—the living and dining areas and kitchen, where it gradually terminates in the secluded guest quarters on the southwest end. To amplify the light, Reue topped the house with a gently sloping roof above floor-to-ceiling windows, and painted the drywall of the curved interior surface off-white.

The architect implemented a number of energy-saving solutions for the LEED-Silver residence, from using structural insulated panels (SIPs) to employing rainwater harvesting and geothermal heating systems. With its green technologies and warm palette, the house fits into its forested landscape while minimizing its environmental footprint. ■



FLOOR PLAN

0 20 FT.  
6 M.



SITE PLAN

0 80 FT.  
25 M.

- 1 ENTRY
- 2 LIVING
- 3 DINING
- 4 KITCHEN
- 5 MASTER BEDROOM
- 6 DEN
- 7 GUEST BEDROOM