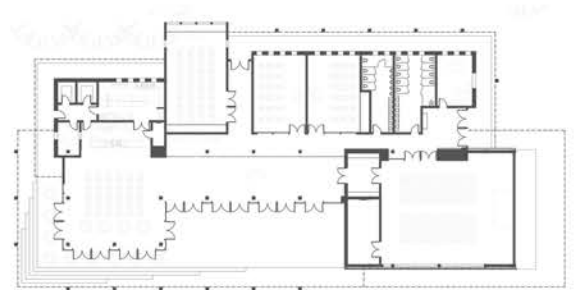




## SOWETO Community Education Campus

The SOWETO Community Education Campus is a pro-bono project for Growing Up Africa, a non-profit whose mission is to drive research-based development and design to build resilient education structures and related infrastructure for a future of ecological, social, and economical sustainability. Located in SOWETO just outside Johannesburg, the 1800 square meter building is an assembly of multipurpose classrooms, lecture and music hall, office administration and meeting spaces anchored by a large auditorium. The structure also includes a cafeteria and "teaching kitchen" to accommodate vocational training in the culinary arts and hospitality services.



This humanitarian initiative brings together design and construction professionals from around the world in an effort to build solid social infrastructure that improves education and ignites entrepreneurship in some of the most impoverished areas of Africa. The construction of the building provides jobs and training for members of the local community, and the building itself is an important node for future community development. All professionals provide their services for free, and all building materials for the project are donated by local and international sponsors.